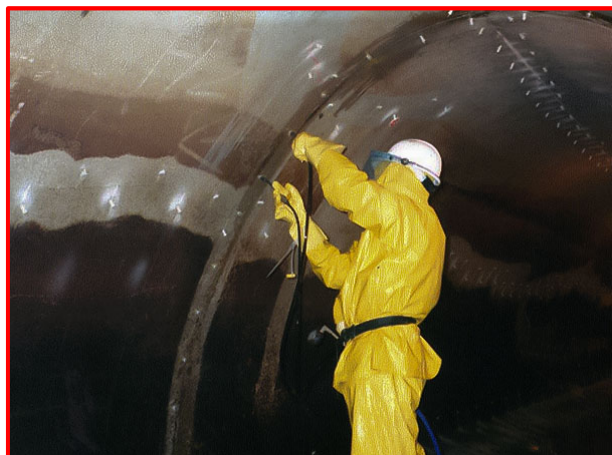


CRACK FLUSHING AGENT

Phosphoric Acid 75%



Cracks and construction joints in concrete structures are appropriately cleaned with CRACK FLUSHING AGENT prior to polyurethane injection

Description

CRACK FLUSHING AGENT is a concentrated, solvent-free, non-toxic solution that is diluted on site and used to clean cracks and construction joints in concrete structures prior to injection of polyurethane resins.

CRACK FLUSHING AGENT, after dilution to 5% concentration, is used for the cleaning and preparing of wet, damp or dry cracks and construction joints in all types of concrete structures including storage tanks, hydro dams and tunnel linings.

Advantages

- Inorganic mineral solution, manufactured from ingredients meeting NSF criterion for use in contact with potable water
- Non-flammable
- Solvent-free, non-toxic
- Complies with Food Chemical Codex Specifications

Where to Use

Application – CRACK FLUSHING AGENT, after dilution to 5% concentration, is suitable for use in potable water tanks and other concrete structures, including moving construction joints and expansion joints, even when seepages or flowing leaks are encountered.

Substrate – Concrete

How to Use

Preparation – Drill injection holes and set packers for polyurethane injection.

Application – Empty the entire bottle of CRACK FLUSHING AGENT concentrate into approximately 15 L of clean water and stir for 1 to 2 minutes. Install diluted CRACK FLUSHING AGENT using a single component injection pump; inject until all visible contamination has been flushed from the crack and a steady flow rate has been achieved.

Clean Up – Flush crack with copious quantities of clean water within 10 minutes. Clean pump and equipment with lots of clean water immediately upon completion of crack flushing operation. Proceed with polyurethane injection using separate resin injection equipment.

Technical Data

Component -	Phosphoric Acid – 75%
Density (20°C) -	1.53 - 1.69 g/cm ³
Viscosity(20°C) -	3.86 mPa.s
Mixing Ratio -	Pour 1.75 kg bottle into 15 litres of clean water
Colour -	Clear
Physical State -	Liquid
Shelf Life -	5 years
Packaging -	1.75 kg bottles

CRACK FLUSHING AGENT

Phosphoric Acid 75%

Limitations

- Requires good general ventilation; use mechanical ventilation when used in confined spaces.
- Incompatible with most metals; corrosive to aluminum, stainless steels, carbon steel, copper, and bronze.

Caution

Phosphoric Acid is corrosive. Avoid freezing conditions. Store in dry location. Use only in adequate ventilation. Prevent contact with eyes, skin, and clothing. Avoid breathing vapours or mist. Wash hands thoroughly after handling. Do not ingest. Wear appropriate PPE including impermeable gloves, face shield and safety glasses.

First Aid

For eye contact: flush with water; seek medical attention. For skin contact: immediately flush with water for at least 15 minutes; cover with sterile dressing; seek medical attention. For inhalation: move to fresh air; seek medical attention. For ingestion: seek medical attention; rinse mouth; do not induce vomiting. Refer to MSDS for more information.

Related Products

Flexible Resin, Universal Resin

Related Literature

Polyurethane Injection Products,
Typical Specification: Polyurethane Crack Injection,
Foundation Crack Injection Techniques, MSDS

Company Overview

Multiurethanes offers technical grouting services for repair of concrete structures in the same industries that you service; residential and commercial buildings, municipalities, utilities and urban infrastructure. Our services include engineering, technical support, materials and equipment.

Technical Service

For additional information, please contact us: 1-800-663-6633 / info@multiurethanes.com